

Preparing your Spin Coater for Return

- Remove the chuck from the Spin Coater.
- Clean the bowl with a polypropylene-safe solvent to remove any chemicals. Please also thoroughly wipe the outside of the case to remove any possible contamination.

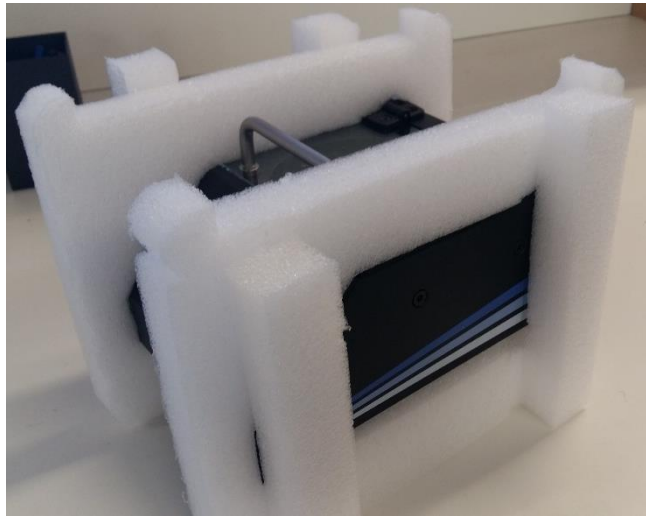
Packing List

Items to be returned:

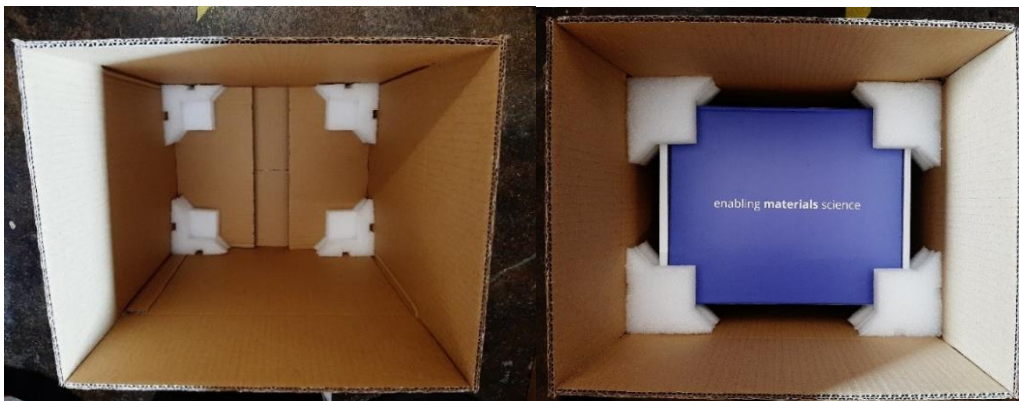
- Spin Coater
 - Power Adapter
 - Power Cable
-

- If you have the original foam packaging, Ossila branded box and outer box, please follow steps I-VIII. Otherwise, follow steps 1-6.
 1. Wrap the equipment in three layers of bubble wrap (or similar packaging material).
 2. Place the unit, power adapter and power cable in a suitable size shipping box (there should be a roughly 2.5cm gap between the unit and the box walls).
 3. Fill any empty space with packaging void fill (or similar packing material).
 4. Securely seal the shipping box and attach the shipping documentation and shipping labels as instructed by Ossila.
 5. Write the RMA number clearly on the outside of the box.
 6. Await collection of your return.

- I. Suspend the Spin Coater in the foam end caps.



- II. Place the unit in the Ossila branded box along with the power adapter and power cable.
- III. Fold the flaps to close the branded box.
- IV. Place 4 foam corner parts into the bottom of the brown outer box and then suspend the Ossila branded box on top of the corner parts. Place the remaining 4 corner foam parts on each corner of the branded box.



- V. Fold down the flaps of the brown outer box and seal along the centre of the box.
- VI. Attach the shipping documentation and shipping labels as instructed by Ossila.
- VII. Write the RMA number clearly on the outside of the box.
- VIII. Await collection of your return.